

LC-R121R3PG

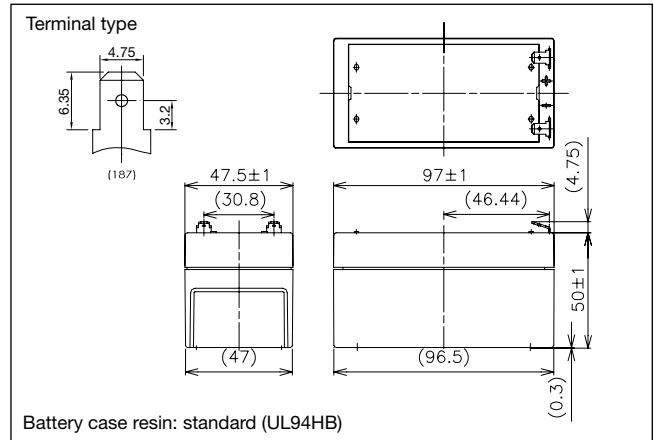
For main and standby power supplies. Expected trickle design life: 6 – 9 years at 20 °C according to Eurobat.

VdS

G196049



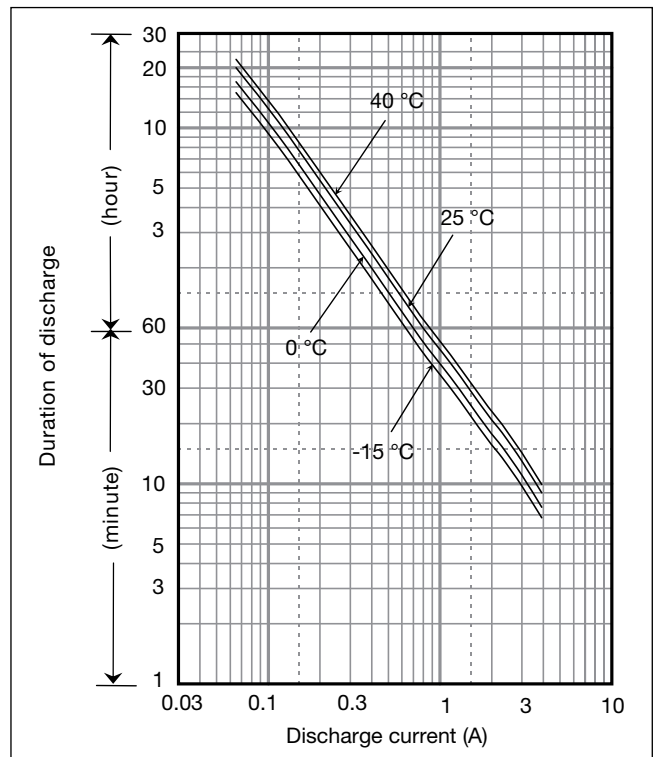
Dimensions (mm)



Specifications

Nominal voltage	12 V	
Nominal capacity (20 hour rate)	1.3 Ah	
Dimensions	Length	97 mm
	Width	47.5 mm
	Height	50 mm
	Total Height	55 mm
Approx. mass	0.59 kg	
Terminal	Faston 187	

Duration of discharge vs Discharge current



Characteristics

Capacity (25 °C)	20 hour rate	1.3 Ah
	10 hour rate	1.2 Ah
	5 hour rate	1.05 Ah
	1 hour rate	0.85 Ah
Internal resistance	Fully charged battery (25 °C)	90 mΩ
Temperature dependency of capacity (20 hour rate)	40 °C	102 %
	25 °C	100 %
	0 °C	85 %
	-15 °C	65 %
Self discharge (25 °C)	After 3 months	91 %
	After 6 months	82 %
	After 12 months	64 %

Watt Table

(Wattage/Battery)

Cut-off V	3min	5min	10min	15min	20min	30min	45min	1h	1.5h	2h	3h	4h	5h	6h	10h	20h	24h
9.6V	78.1	61.6	40.2	30.7	25.8	19.2	13.6	10.8	7.49	5.73	4.32	3.30	2.73	2.22	1.46	0.787	0.657
9.9V	72.5	57.8	39.4	30.5	25.3	19.0	13.5	10.8	7.34	5.68	4.30	3.28	2.70	2.21	1.45	0.784	0.654
10.2V	66.9	54.2	38.4	29.9	24.9	18.8	13.4	10.6	7.19	5.54	4.25	3.26	2.68	2.19	1.44	0.782	0.652
10.5V	59.4	48.5	35.6	27.8	23.7	18.4	13.1	10.4	7.04	5.34	4.19	3.24	2.66	2.16	1.43	0.780	0.650
10.8V	50.2	42.9	31.7	26.0	23.0	17.7	12.9	10.2	6.82	5.13	4.08	3.24	2.60	2.16	1.41	0.758	0.650

Ampere Table

(Ampere/Battery)

Cut-off V	3min	5min	10min	15min	20min	30min	45min	1h	1.5h	2h	3h	4h	5h	6h	10h	20h	24h
9.6V	7.02	5.53	3.59	2.67	2.22	1.64	1.16	0.921	0.634	0.484	0.363	0.276	0.228	0.185	0.122	0.0655	0.0655
9.9V	6.52	5.18	3.52	2.65	2.18	1.63	1.15	0.921	0.621	0.480	0.361	0.274	0.226	0.184	0.121	0.0654	0.0545
10.2V	6.01	4.86	3.43	2.60	2.15	1.61	1.14	0.903	0.609	0.468	0.358	0.273	0.224	0.183	0.120	0.0652	0.0543
10.5V	5.34	4.35	3.18	2.42	2.04	1.57	1.12	0.885	0.596	0.451	0.352	0.271	0.222	0.181	0.119	0.0650	0.0542
10.8V	4.51	3.85	2.83	2.26	1.99	1.52	1.10	0.867	0.578	0.433	0.343	0.271	0.217	0.181	0.117	0.0632	0.0542

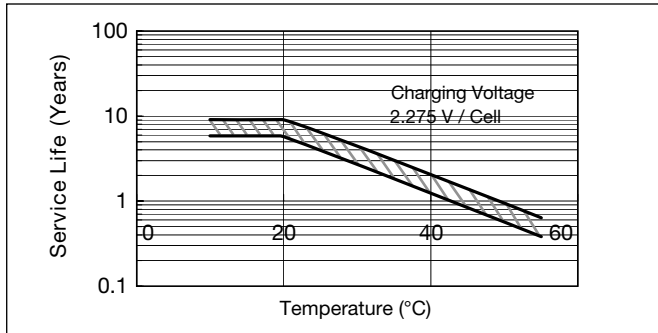
Charging Method

Cycle use	Control voltage: 14.5 - 14.9 V; Initial current 0.52 A or smaller
Trickle use	Control voltage: 13.6 - 13.8 V; Initial current: 1.08 A or smaller

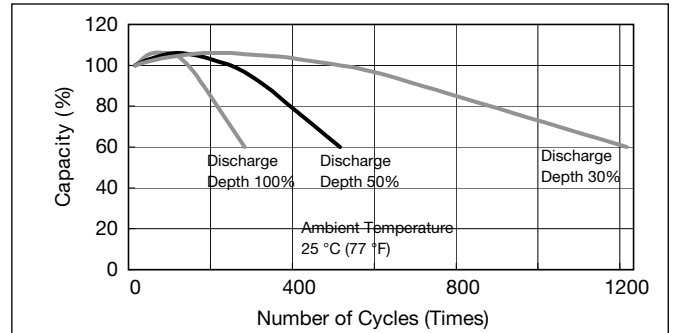
Cut off voltage

Discharge current	0.065 A - 0.26 A	0.26 A - 0.65 A	0.65 A - 1.3 A	1.3 A - 2.6 A	2.6 A - 3.9 A
Cut off voltage (V)	10.5	10.2	9.9	9.3	8.7

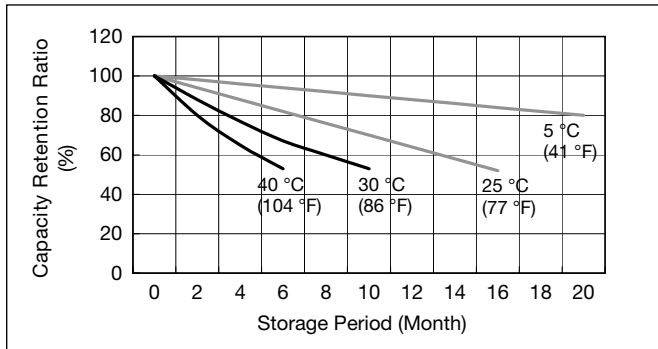
Influence of Temperature on Trickle life



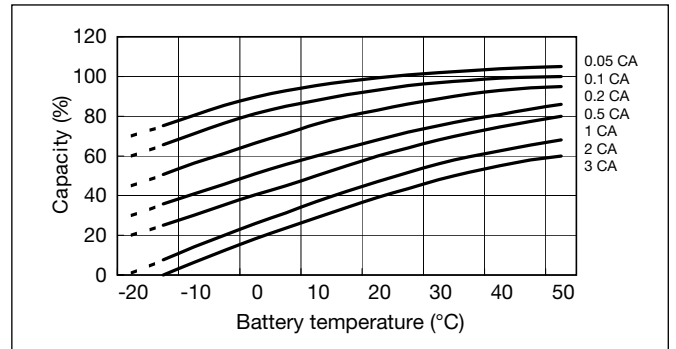
Cycle life vs Depth of discharge



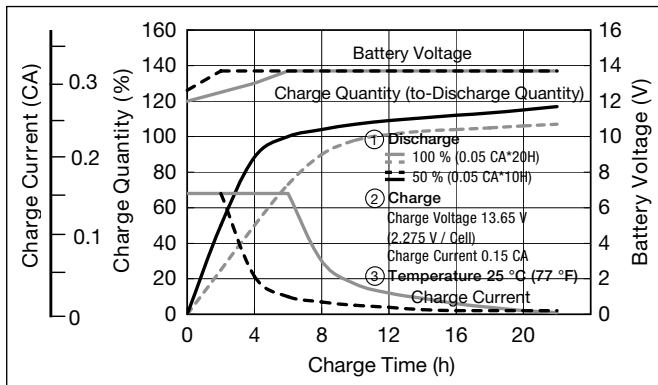
Residual capacity vs storage period



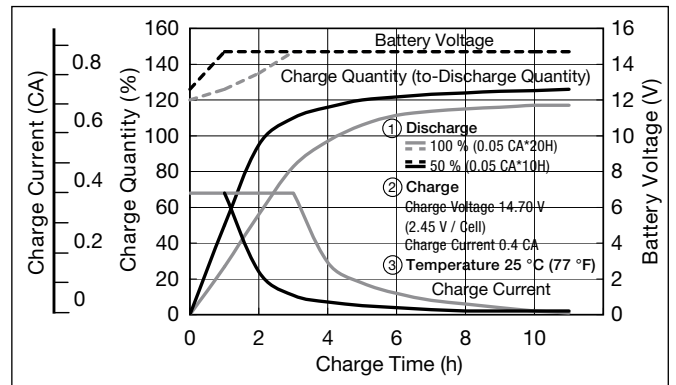
Discharge capacity by temperature and by discharge current



Constant-voltage and constant-current charge characteristics for Trickle use



Constant-voltage and constant-current charge characteristics for Cycle use



Discharge characteristics

