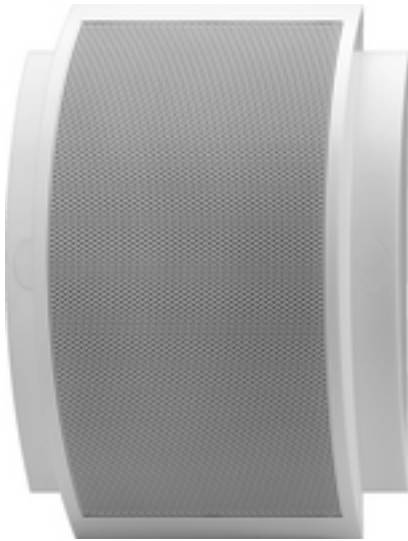


## ESP-62AB/WS - PA Wall Speaker



PA A/B wall speaker,  
with EN 54-24 certification for voice evacuation systems with A/B speaker distribution according to EN 60849.

- 100 V line technique
- 13 cm full range speaker with dual voice coil
- 2 separate transformers with power taps with 6/3/1.5 W each
- Connection via 2 ceramic screw terminals inside the cabinet
- Symmetrical design allows for horizontal and vertical mounting
- Plastic cabinet with open rear panel and protective metal front grille
- Supplied with screws and wall plugs

## Technical data:

100 V	: 1
EN 54 certification	: 1
Active/passive	: passive
Transmission technology	: 100 V
Total output power	: -
Power rating (RMS)	: -
Total power rating	: -
Power rating (RMS)	: 2 x 6/3/1.5 W
Impedance	: -
Frequency range	: 80-19,000 Hz
THD	: -
S/N ratio	: -
Input signal	: -
System	: -
Full range speaker	: 13 cm, dual voice coil
Bass speaker	: -
Midrange speaker	: -
Tweeter	: -
Number of speakers	: 1
Speaker size	: 13 cm
SPL	: 93 dB/W/m
Max. rated SPL	: 101 dB
Radiation angle/beam angle	: 160°
Radiation angle, horizontal	: 160°
Radiation angle, vertical	: 160°
Features	: -
Housing material	: ABS
Colour	: white, RAL 9010
Mounting device	: screws
Protected against ball rebound	: -
Protection class	: -
Admiss. ambient temp.	: -10 °C to +50 °C
Power supply	: -
Dimensions	: 240 x 330 x 83 mm
Width	: 240 mm



Height	: 330 mm
Depth	: 83 mm
Weight	: 1.5 kg
Inputs	: -
Outputs	: -
Replacement voice coil	: -
Other features	: -
Accessories	: -
Packing dimensions (W x H x L)	: 0.245 x 0.1 x 0.345 m
Gross weight	: 1.806 kg
Net weight	: 1.545 kg